

Speed Estimator Pro™ Version 3

is a new release of a unique PC software tool to develop accurate labor standards quickly and easily. Designed for Industrial and Manufacturing Engineers, time study analysts and technicians, factory supervisors, and anyone needing time standards for labor performance measurement. **Speed Pro** is quick, intuitive, and meets every need of the cost control professional. **Speed Estimator Pro** is designed and marketed by experienced professional Industrial Engineers. Speed Pro combines experience in work measurement, performance analysis, and manufacturing methods analysis offered to firms since 1983.

Starting with an easy-to-use Windows menu, **Speed Estimator Pro** is a complete labor standards generation tool for the manufacturing professional. You can fabricate elements with basic motion groupings, use the many predetermined tool use or “macro” elements in the program, or add your own pieces of standard data in a “user-defined” elements file.

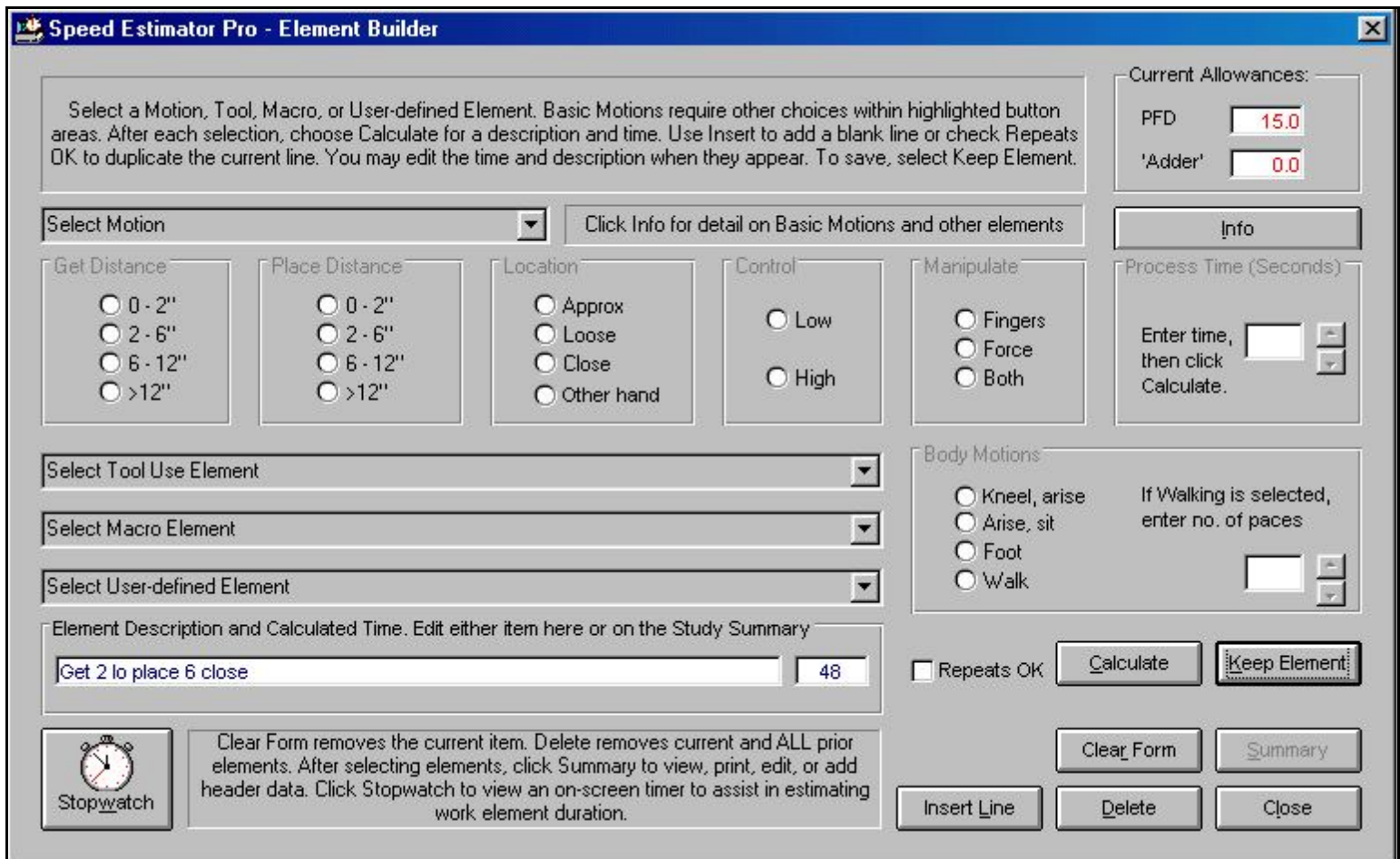
The **File Menu** allows you to create a new study, open and review or modify an existing study, or delete old estimating files. After developing a standard time from any number of preselected or custom elements, you can print the Study Summary, and save the data for the next problem.



The **Options Menu** allows you to set or change

two types of allowances that are applied to the total of calculated normal time in the Study Summary. You can apply or change an allowance for Personal, Fatigue and Delay (PF&D) or use an extra allowance, called the “Adder.” This allows you to apply extra time to the study to account for poorly-defined methods, design growth, or other concerns. You can also add “user-defined” elements here.

The **Element Builder** screen (below) is the program’s main screen. Here, you can fabricate time elements and descriptions four different ways. Use predetermined elements for tool use sequences and “macros” or design your own elements. If desired, do a methods analysis at the elemental motion level to assign time for Get and Place, Place, Body Motions, Finger Manipulations, Eye Focus, and Process Time. Use any combination of elements, plus insert blank lines or repeat elements in the study. When all elements are added, click Show Summary to view the elements, times, totals, and allowances. Then print or save the file.



This new version of **Speed Estimator Pro** features a “one-click Stopwatch Function.” Simply click the Stopwatch button to view an on-screen stopwatch which counts up in hours, minutes, seconds, and hundredths. A great feature for timing simulated motions in the office, or estimating new operation times.

In **Speed Pro**, element descriptions and times are saved in sequential text files. You can copy the files for use in other applications, such as word processors and spreadsheets.

Other screens not shown here include those to adjust default PF&D and “Adder” allowances, Windows Help, Add User-defined Elements, and Work Measurement Tips.

The **Speed Estimator Pro Study Summary** (portion shown at right) displays every element and time you have added to the study on the Element Builder screen.

In the summary, you can also modify or delete elements, times, and header information. The program calculations shown include the total element time, total normal time, and standard time in TMU, seconds or minutes. Standard hours are shown as hours /each, /100, or /1000 units. Prior to printing and saving, you can also change PF&D or Adder allowances here and see the result immediately!

Other features of **Speed Estimator Pro** include:

- ✓ New “Work Measurement Tips.” Scores of tips on tools, techniques, and guides to good human relations for the work measurement task. Shows a random Tip on program startup.
- ✓ A comprehensive electronic-format User Guide and context-sensitive Windows help files, with a full Technical Glossary of work measurement terms.
- ✓ No required training, practice, certifications, or added costs. **Speed Estimator Pro** is accurate and easy to use!
- ✓ Technical support provided by Production Technology, a supplier of management and engineering services since 1983. Your satisfaction with this product is guaranteed.
- ✓ **Speed Estimator Pro** site licenses are available. Costs are reasonable and assure your legal use. Contact Production Technology for information.

Speed Estimator Pro has accuracy comparable to many popular higher-order (and more expensive) systems. Compare ease of use and accuracy with MTM-2, MTM-UAS, MOST, MSD, GPD, or any other proprietary system.

Speed Estimator Pro
V.3
for Windows
\$109 plus \$7 shipping
(\$12 international)

Speed Estimator Pro™

SOFTWARE ORDER FORM - V.3

Check or money order for \$109 plus shipping enclosed.
 Payable to Production Technology, PO Box 24261, Tampa, FL 33623-4261 USA.

Invoice company PO # _____ Signature: _____

(Ship to)
 Name _____ Title _____

Company Name _____ Telephone (____) _____

Shipping Address _____

City _____ State/Province _____ Zip/Postal Code _____

You may also order on Production Technology’s web page at <http://www.protech-ie.com>. Credit card payments are accepted via secure Internet server.