

CURV1™ Version 2

is a new release of the unique learning curve application package from Production Technology, a premier supplier of cost control software and learning curve training programs. **CURV1** is a tool for cost estimators, Industrial and Manufacturing engineers, program managers, and buyers. Over more than two decades and several software versions, it has been a unique aid to estimating, program and production management, and the bid and proposal process. **CURV1** is also used by US government auditors and other personnel. There's simply nothing better for the cost control professional who needs a quick and accurate learning curve tool.

CURV1 incorporates the learning curve terminology, definitions, and formats to help even novices better understand the technique.

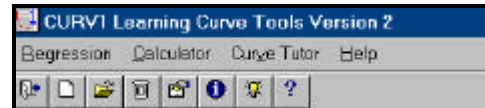
CURV1 was designed and developed by a cost control and proposal specialist from the aerospace and electronics industry. Years of cost estimating experience are incorporated into this tool.

CURV1 System Requirements

Your Windows computer can run **CURV1** if it has the following features:

- ✓ A 486 CPU (processor) or faster.
- ✓ 32 megabytes RAM memory.
- ✓ A hard drive with approximately 4 megabytes available space.
- ✓ A CD-ROM drive (for program installation).
- ✓ A pointing device (mouse or equivalent).
- ✓ A color display.

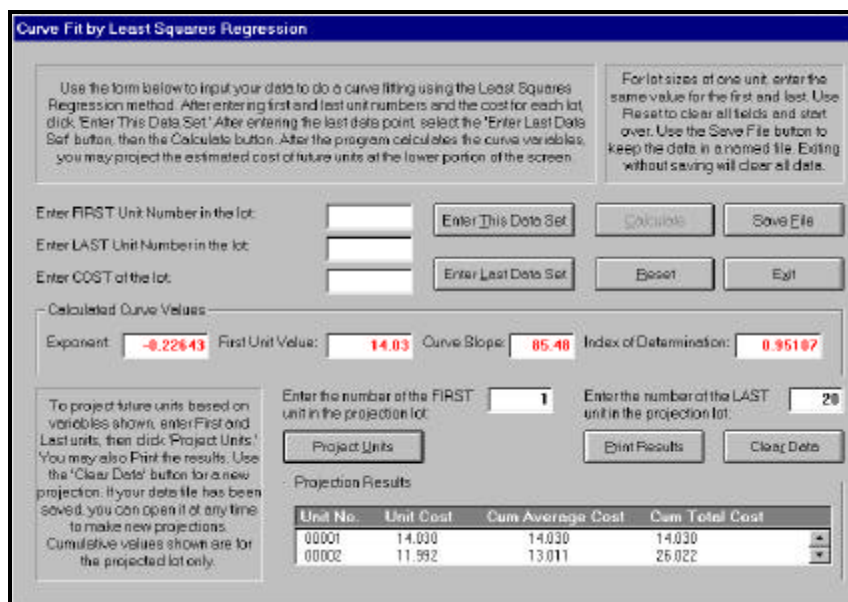
This version of **CURV1** installs easily on any computer with a Windows operating system (9X, NT, 2000, Me, XP). **CURV1**'s **Main Menu** in Windows offers several choices and tools, including *Regression*, *Calculator*, and *Curve Tutor* "drop-down" menus. You can fit curves easily, make future estimates from curve information on file, solve for any curve variable, access a complete curve *Glossary of Terms*, pick up quick tips, explain formulae, or use many



The Regression Menu allows you to construct a new curve, open a existing regression to make new projections, or delete old information. After fitting your data to a curve, you can save the file and print *slope*, *exponent*, *T1 value*, *Index of Determination* ("goodness of fit"), and *Unit, Cumulative Average, and Cumulative Total* values for any number of future units.

The Curve Fit by Least Squares

Regression screen (below) is the main screen in the **CURV1** program. Here, you input actual data to the program, fit a trend line to the data, and compute curve parameters. You can enter lot sizes of one unit (the first and last unit numbers are equal), multiple unit lots, or intermixed lot sizes. When data is input, simply click on "Calculate" for all factors to appear. Following the calculation, you can save the data, project additional unit values, clear the form and restart, or print results. In the view shown, an existing file has been opened and



When you wish to project future unit values from the constructed curve, simply enter the numbers of the first and last units in the follow-on lot, and select "Project Units." **CURV1** will compute unit and cumulative total values for the units in the projected lot.

There are several other screens not shown in this summary of features. These include a comprehensive Windows Help screen with search and find utilities, and user dialog screens for file operations. All program screens are intuitive and easy-to-use.

The Calculator Menu solves the learning curve equation for any variable, given the values of others.

For example, you can solve for the first unit (*T1*) if you know the *curve slope* and the value for any unit in the build. You can solve for an *Nth Unit* if you know (or can estimate) *T1* and the *slope*. And, you can solve for *slope* if you know an *Nth Unit* and *T1*. Finally, you can easily calculate True Lot Midpoints

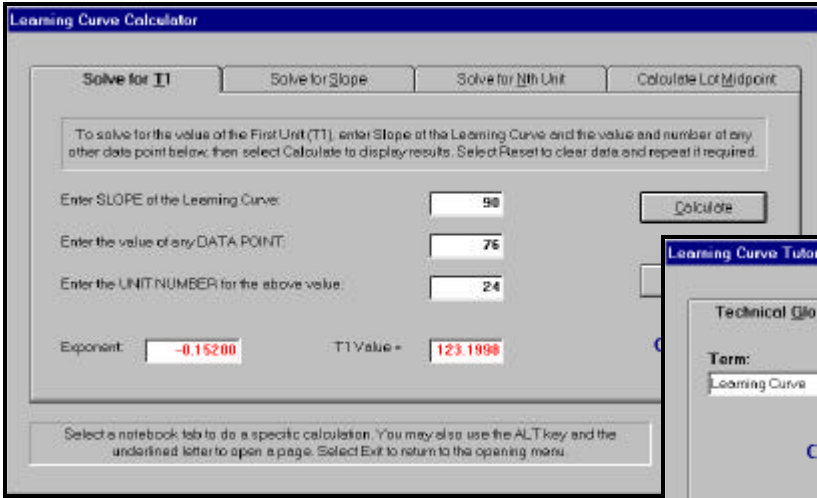
The Curve Tutor menu provides a comprehensive *Technical Glossary*, a *Curve Factor Calculator* you can use to construct and print curve tables, a list of common *formulae*, and *curve exponent values*. These features, plus a new "Tips on Using Curves" screen, provide an excellent "mini-tutorial" on learning curve application.

projection data input to the program.

The resulting follow-on unit values are calculated by the program (bottom right on

CURV1 data files are saved in a sequential text file format. The data can be readily cut and pasted to other applications.

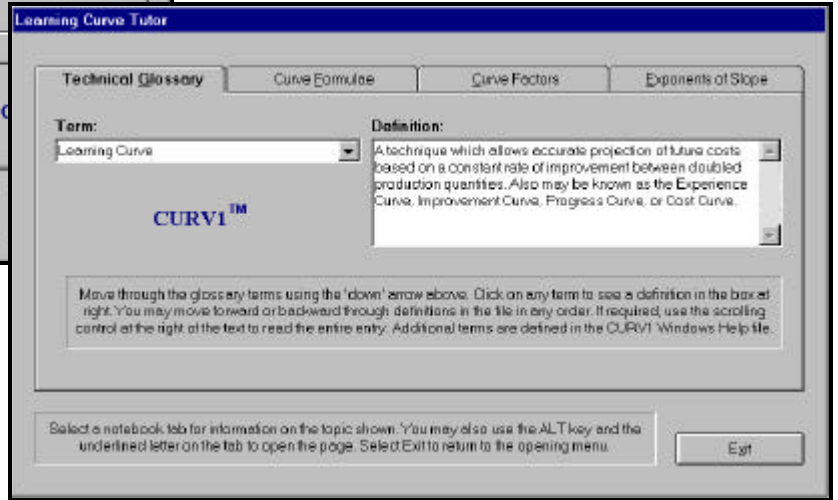
The **CURV1** Calculator screen (below) displays four tabs. Choose a tab to show the required data input fields to solve for a missing parameter. Solve for the Theoretical First Unit (T1), an Nth Unit value, or Slope of the learning curve. Calculate True Lot Midpoint (algebraic midpoint) instantly for any lot size. See results immediately, then reset the fields to do another problem!



On the **Curve Tutor** screen below, choose from four tabs. Each tab displays another facet of curve data and formulae. The first tab displays an extensive *Glossary of Terms* for learning curves. Select a term and the definition appears. Scores of terms are explained.

The next tab shows several *curve formulae*, including the basic learning curve expression, True Lot Midpoint formula, and Slope Exponent derivation.

Select the third tab to access **CURV1's** utility feature that generates *curve factor tables*. Input any beginning and ending unit numbers and a curve slope, and the program will calculate tables for you! View or print the results, then Reset if desired to generate factors for another slope or range of units.



Other **CURV1** features and information

- ✓ A comprehensive User Guide (in Adobe PDF and Microsoft Word DOC formats) and on-line context sensitive Windows Help files, including Glossary, Search/Find, and How to Use Help selections.
- ✓ Technical support from Production Technology, a supplier of management and engineering services since 1983. Your satisfaction with **CURV1** is guaranteed.
- ✓ Cost-effective site license agreements are available for **CURV1**. The cost for organization-wide use of this unique set of learning curve tools is reasonable, and assures your legal use of this product. Contact Production Technology for a quotation.

CURV1™ for Windows
is priced at \$119
plus \$7 shipping (\$12 international)

SOFTWARE ORDER FORM

- Check or money order for \$119 (add \$7 domestic shipping, \$12 international) enclosed. Payable to Production Technology, PO Box 24261, Tampa, FL 33623-4261 USA.
- Invoice company PO # _____ Signature: _____

Name _____ Title _____

Company Name _____ Telephone (____) _____

Shipping Address _____

City _____ State/Province _____ Zip/Postal Code _____

You may also order via e-mail (protec99@cs.com), or on Production Technology's web page at <http://www.protech-ie.com>